



# Relproc

Plant Life Cycle Solution

Plant life cycle solution

Engineering Design  
/ ESCM/ ESC

# About Us

RELPROC Engineering is the best-in-class integrated engineering solutions and LSTK provider in **Chemical, Food, Oil and Fat, Refinery Sector.**

## VISION



**To be a world best one stop solution provider for plant life cycle.**

## VALUES



**Safety first.**



**High quality with optimized cost**



**On Schedule**

# Geographical Locations



 Engineering and Fabrication

 Local Representatives

# SERVICE AND SECTORS

✓ Oil milling & virgin oil plant

✓ Edible oil refining

✓ Tomato Ketchup

✓ Drinking water plant

✓ Multi-Purpose liquid soap

Project  
feasibility /  
Economic  
study

Investment  
recommenda  
tion

Asset  
operation /  
Asset  
technical  
management

**Relproc**  
Plant Life Cycle Solution

Engineering

Construction  
/  
Construction  
management

Fabrication  
and supply

✓ Conveying system

✓ Filtration system

✓ Steam boiler and hot oil system

✓ Bottle filling system

✓ Site fabricated storage tank



# OIL MILLING AND VIRGIN OIL PLANT



Our high efficient expeller suits for oil expelling of most seeds produced in the world such as **cottonseed, mustard, groundnut, palm kernel, coconut, canola, soybean, sunflower, sesame, maize germ, cashew nutshell, linseed, copra, rapeseed, mahua, niger, jatropha, neem etc.**





# EDIBLE OIL REFINING



Our rich experience and continuous R&D offer the client **world best class technology** for all kind of edible oil refining with **optimized OPEX** using high energy integration.



# TOMATO KETCHUP

# Relproc

Plant Life Cycle Solution



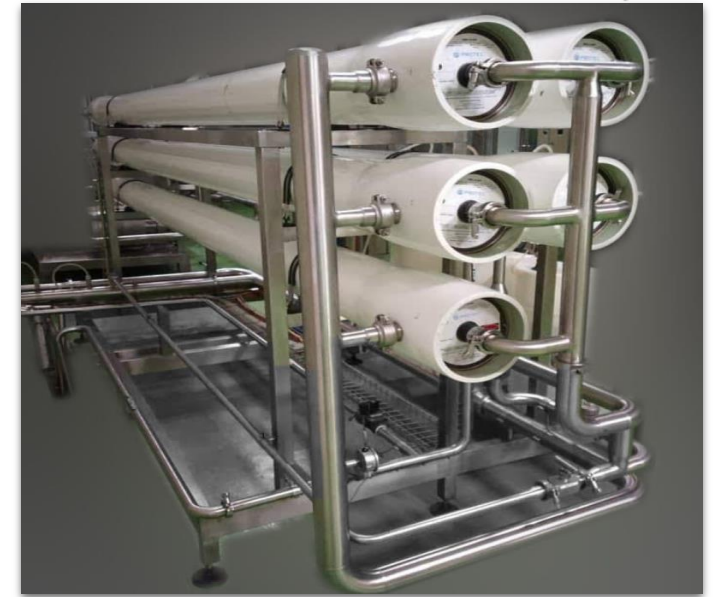
Our high efficient machine reduces the **CAPEX and OPEX**. An integrated solution ensures the plant can be utilized during the off-peak session.



# DRINKING WATER PLANT

# Relproc

Plant Life Cycle Solution



Our expert team provides the **trouble-free system** to cover the water uncertainty.





# MULTI-PURPOSE LIQUID SOAP PLANT



Such as **Liquid soap, floor cleaner, toilet cleaner, glass cleaner, shampoo, sanitizer, etc.,**

Our rich experience offers the client the **multi-purpose plant** covers the various range of products.





# FILTRATION SYSTEM

# Relproc

Plant Life Cycle Solution



Our continuous R&D and experience in the various applications provide the right filter solution to clients. Facility to conduct the pilot study.



# STEAM BOILER AND HOT OIL SYSTEM

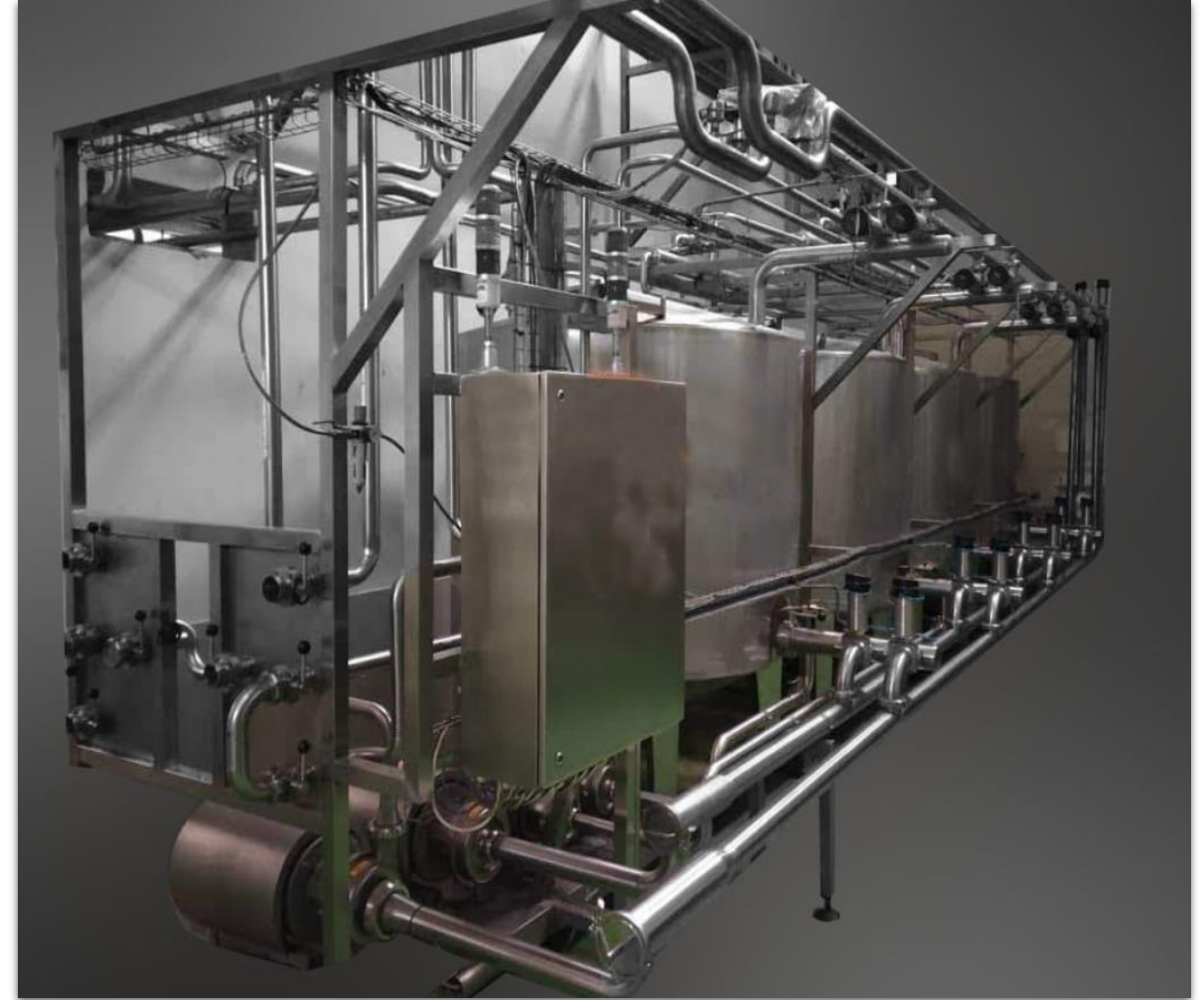


Our strong technical and experience team deliver the **Steam Boilers / Hot Oil System** using various fuels like **Wood, Coal, Gas, Diesel, Furnace oil etc.,**

# CLEAN IN PLACE (CIP)



Our strong technical team will provide **CIP solution** to all kind of industries with **Semi / Fully automatic system.**



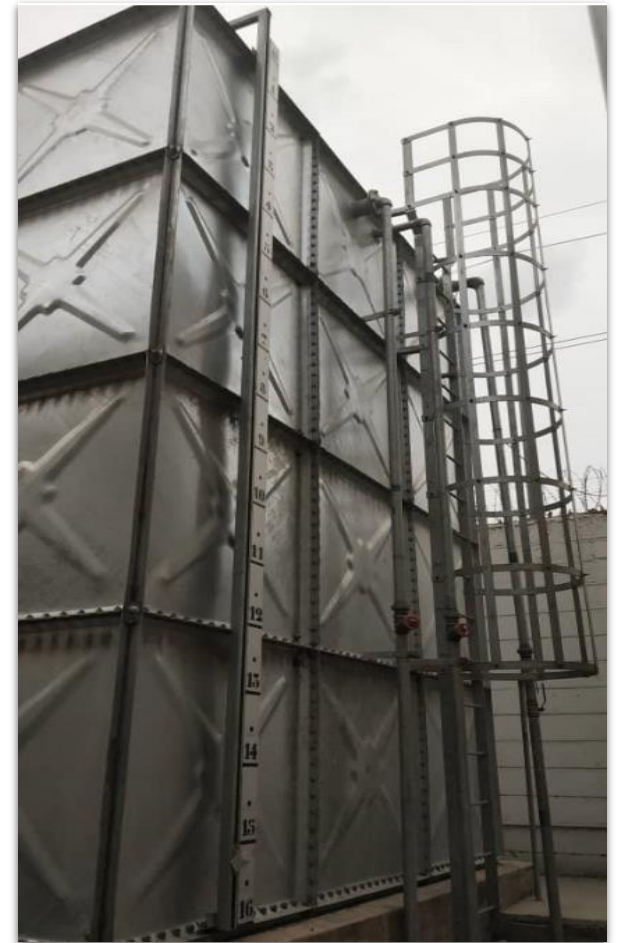


## STORAGE TANK



We offer **both shop and site fabricated tank and tank forms.**

Our specialized design **rectangle pre-fabricated tank** can minimize the site work.





# CONVEYOR SYSTEM



Our rich experience in **Industrial and Material handling Conveyor systems** to meet customer specific requirements.



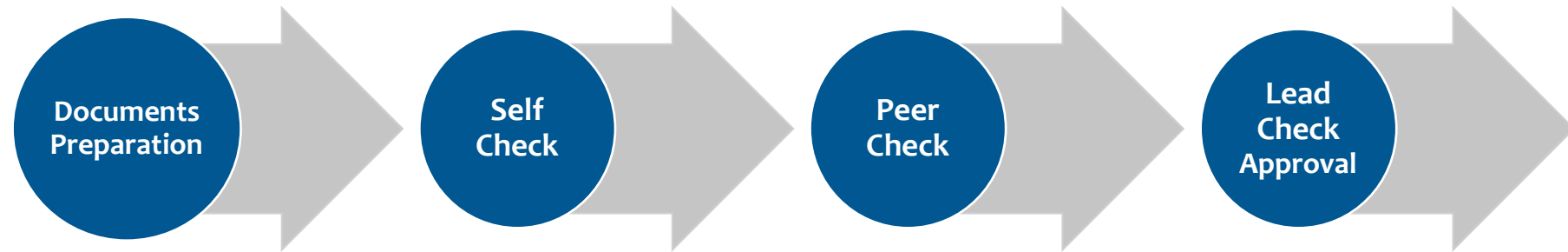
# CONVEYOR SYSTEM



Our product ranges are including **Belt, Screw, Slat chain, Roller, Loading / Unloading Conveyors and Bucket Elevator** used in various industries.

# QUALITY MANAGEMENT SYSTEM

## Engineering Documents



## Fabrication





# OUR VALUABLE CLIENTS

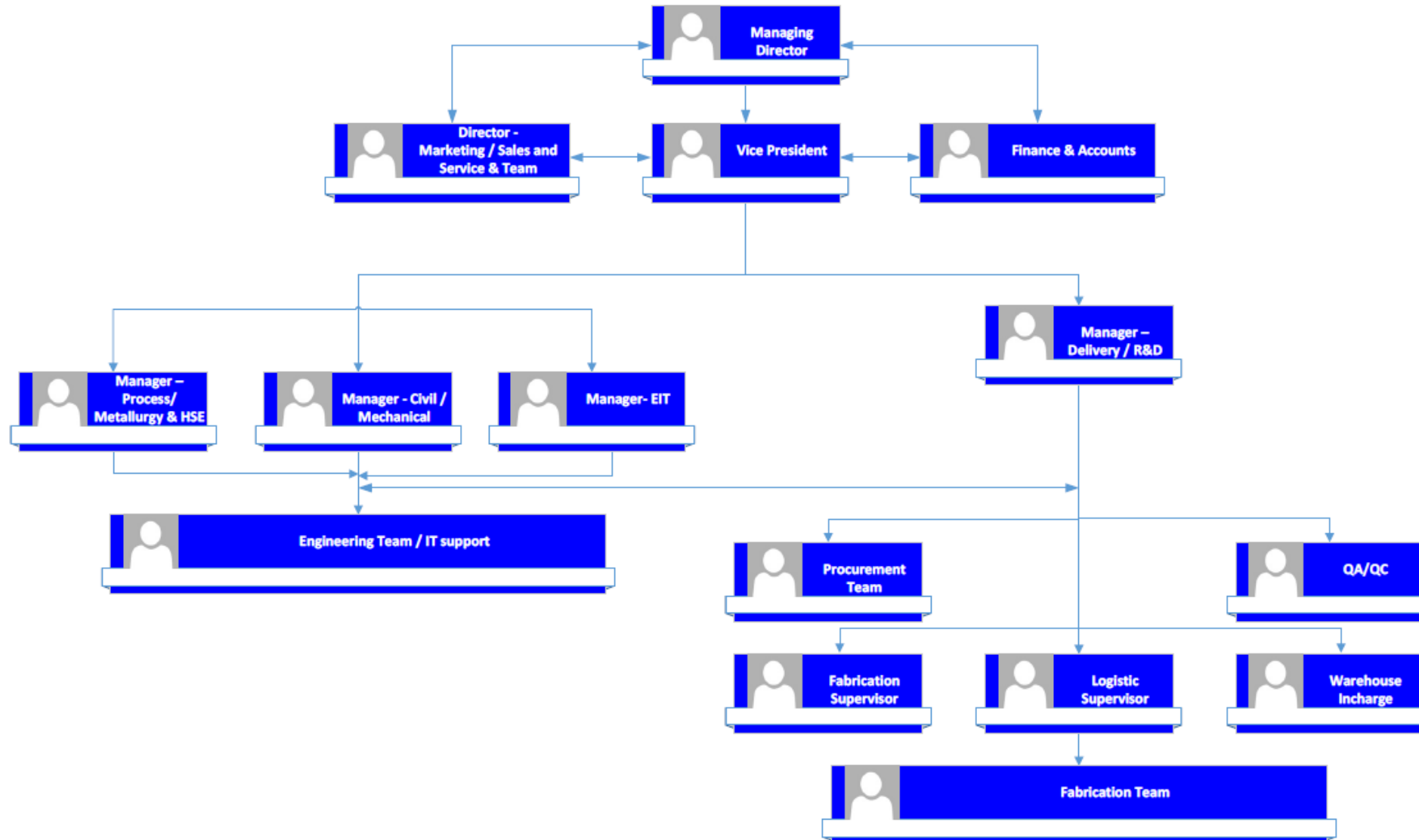


# WHY RELPROC

- ✓ **A one stop source for plant life cycle solution**
- ✓ **Well experienced technical team with multinational exposure**
- ✓ **Ability to handle accelerated Project schedules**
- ✓ **Capabilities to provide tailor-made designs for single and multi-level integrated modular packages**
- ✓ **Compliance with international codes and standards**
- ✓ **Having in-house Production Management Software (PMS) for client OPEX/ Inventory reporting and asset technical analysis & management.**



# ORGANIZATION CHART



# CONTACT US

 **P Rama Moorthy**  
**Vice President**

 **Phone : + 971 545380430**

 **Email : ramamoorthy@relproc.com**

 **S Saravana Kumar**  
**Director – Marketing**

 **Phone : +91 9791047858 / +91 9486933858**

 **Email : kumar@relproc.com**





**Relproc**  
Plant Life Cycle Solution

**Thank You**